



CT-400 Printer and Print Driver Installation Guide for KennelSoft Applications

Version 1.01
November 2005

PetDetect
1117 Windsor Drive
Gallatin, TN 37066
phone: 615-230-5473
fax: 615-230-5473
attention: Dan Starko
email: dansta@comcast.net
www.PetDetect.com

System Requirements for PetDetect

Operating System:	Win 98SE, ME, NT, 2000, XP, Win 2003 Server
Processor:	Pentium 150 MHz or faster
RAM:	128 MB or higher
Hard Drive Free Space:	10 MB
CD or DVD Drive:	Yes
Software:	KennelSoft Version November 2005

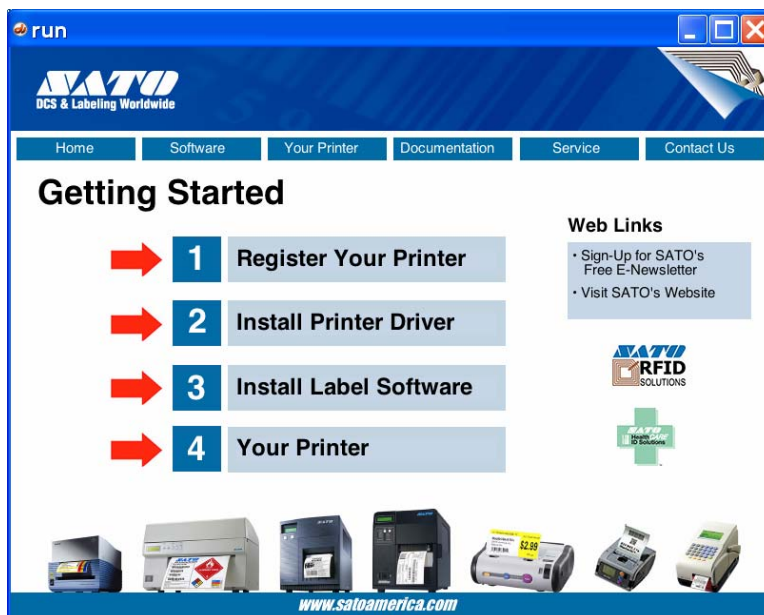
Installing Your New PetDetect CT-400

DO NOT PLUG YOUR PRINTER CABLE TO YOUR COMPUTER UNTIL INSTRUCTED TO DO SO.

1. Insert the CD packaged with your new CT-400 labeled “SATO Manuals/Window Drivers”.

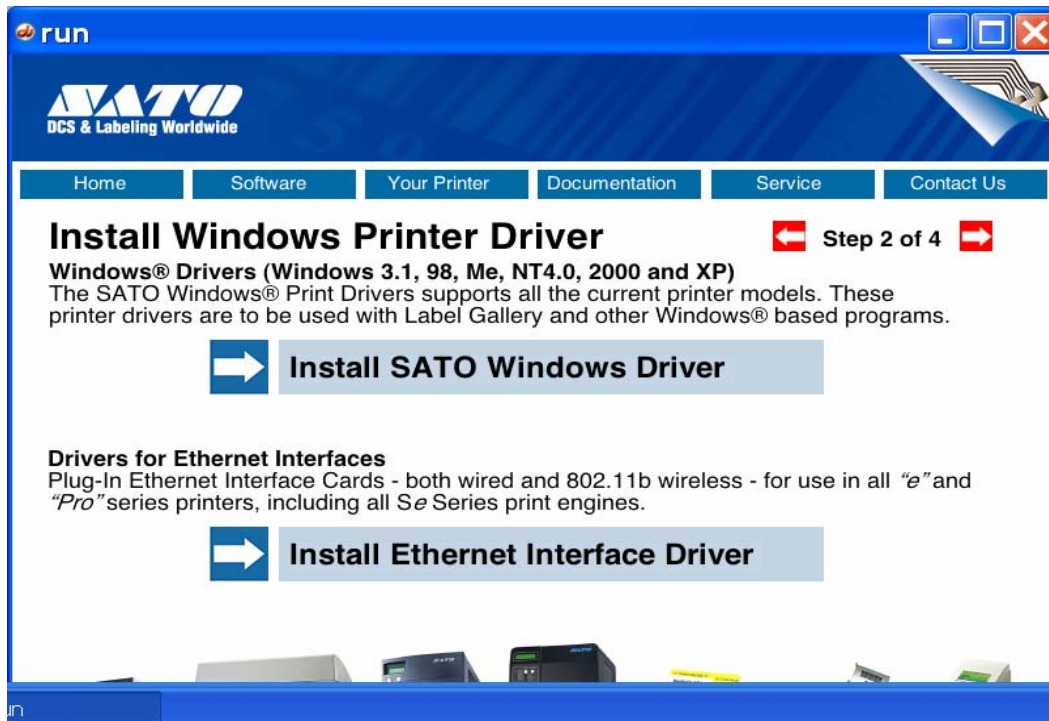
If the CD driver screen does not load within one minute, navigate to the CD drive in “My Computer”, right click the CD drive, and click “Open”. A file list will appear. Double click “RUN.EXE”.

2. The following window will appear:

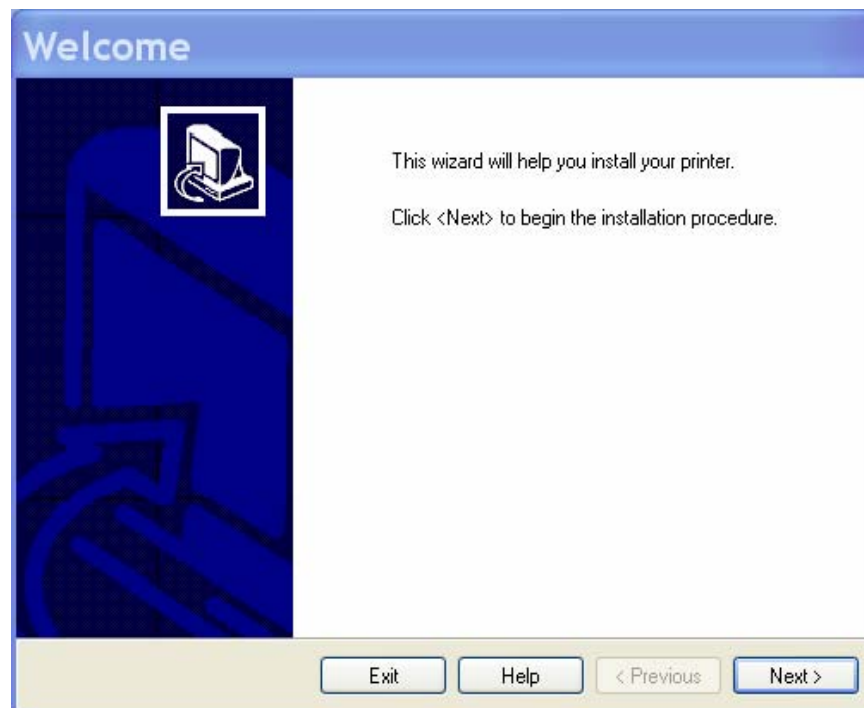


3. Click “Install Printer Driver”.

5. The following window will appear:

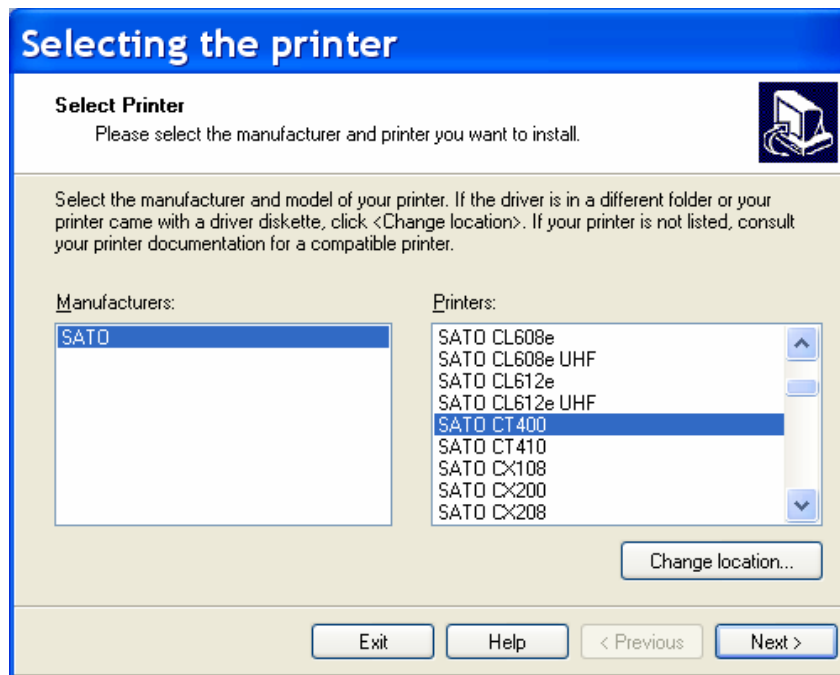


6. Click on “Install SATO Windows Driver” and the following window will appear:

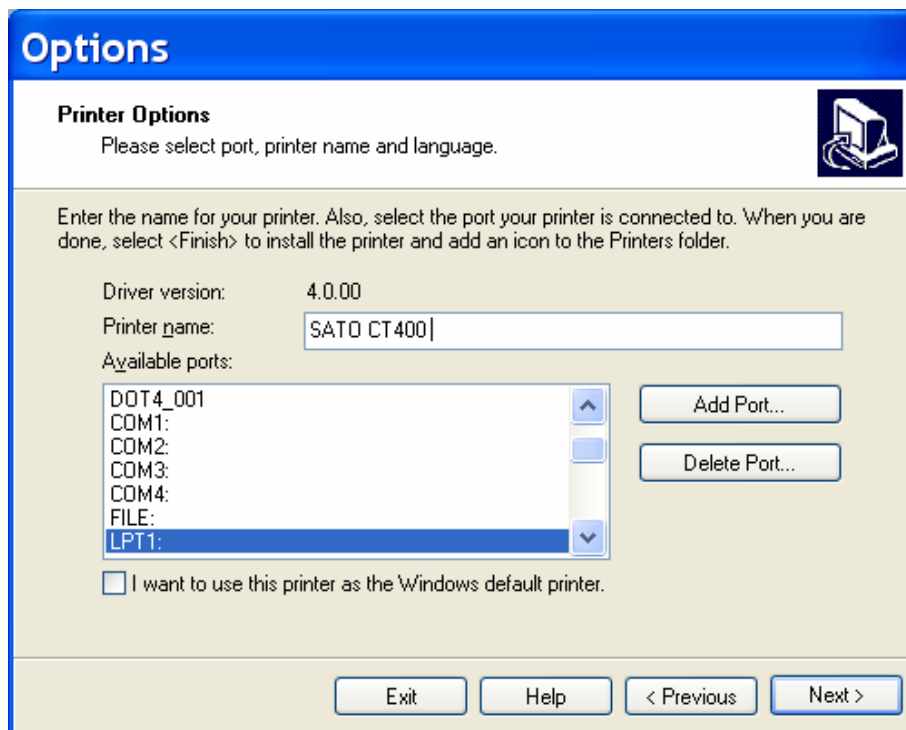


7. Click “Next >”.

8. Files will download and the following window will appear:

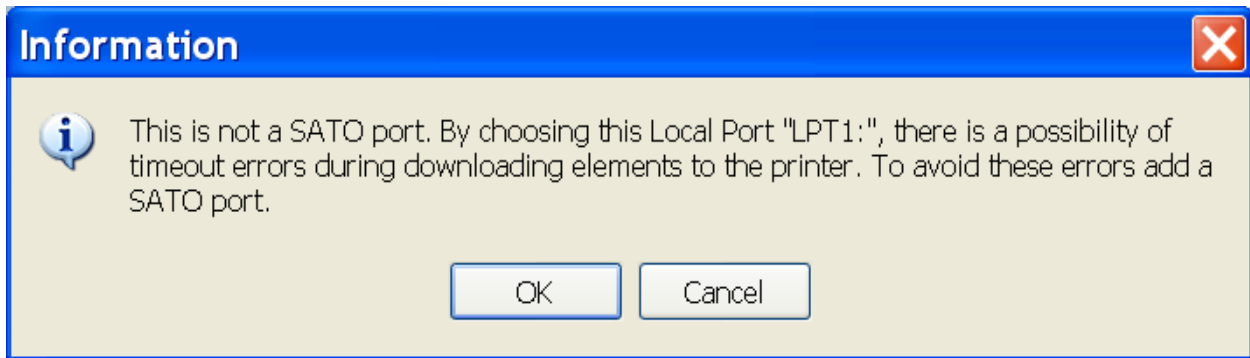


9. Scroll down, select “SATO CT 400”, click “Next >”, and the following window will appear:

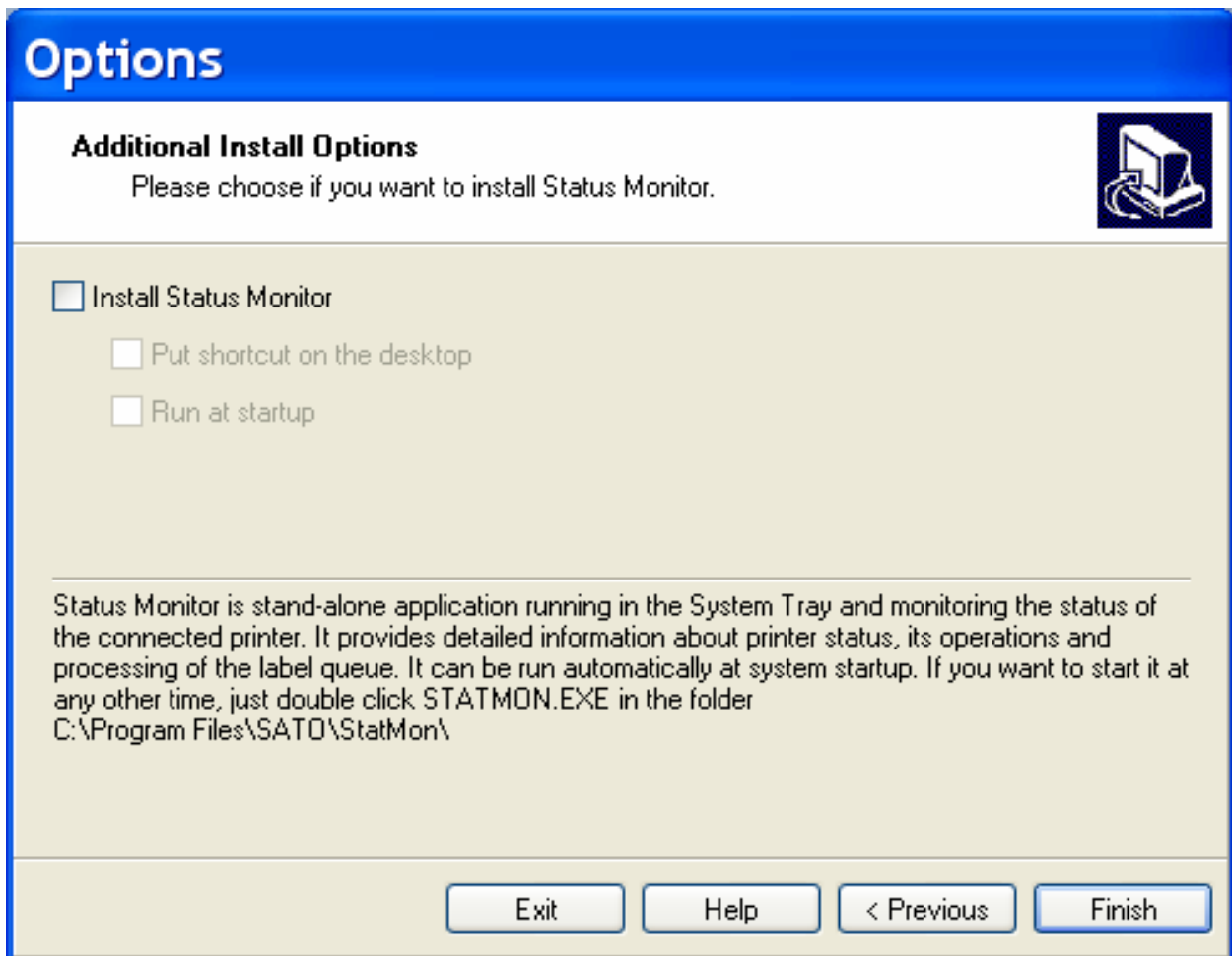


10. Change the “Printer name” to “PetDetect Collars”, highlight “LPT1:” as your port, and click “Next >”.

11. The following window will appear:

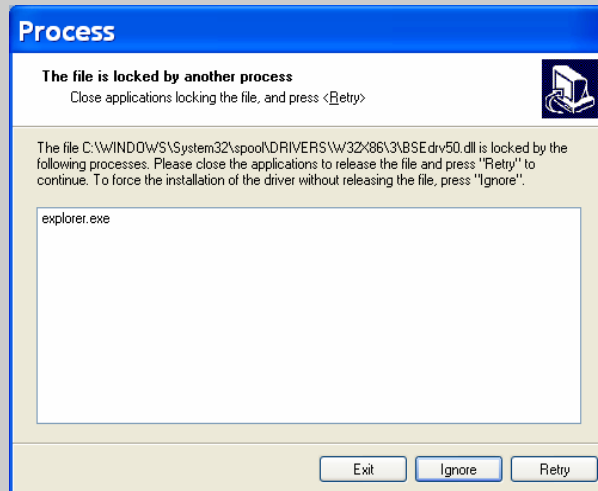


12. Click “OK” and the following window will appear:

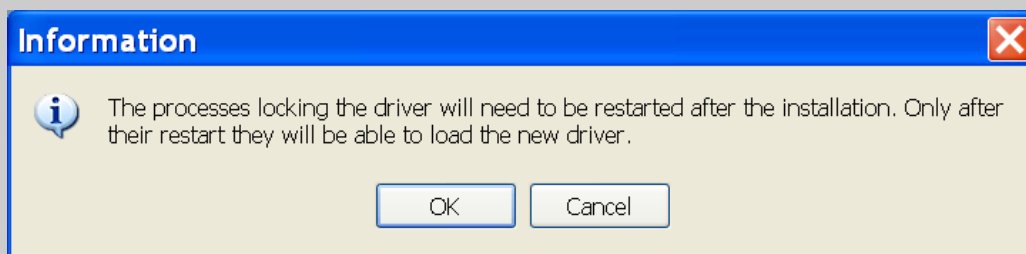


13. **DO NOT** select “Install Status Monitor”, click “Finish”, and wait while files are copied. After the files are copied, close any remaining open windows and return to desktop.

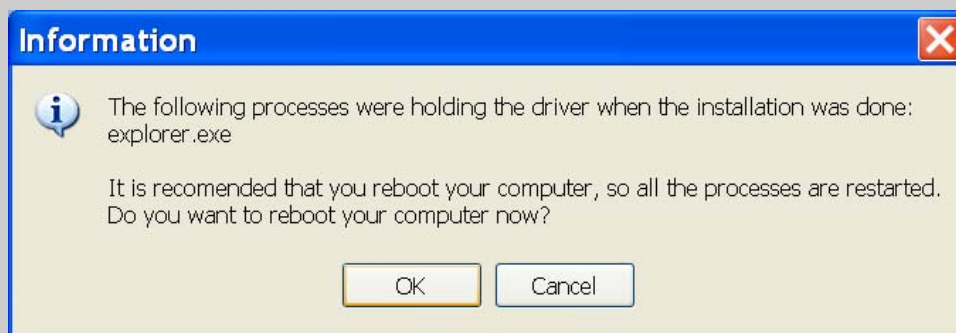
If the following window does not appear at this point of the installation, please proceed to the next page
If at any time during the installation you receive the following error, proceed as follows:



1. Click “Ignore” and the following window will appear:



2. Click “OK” and the following window will appear:

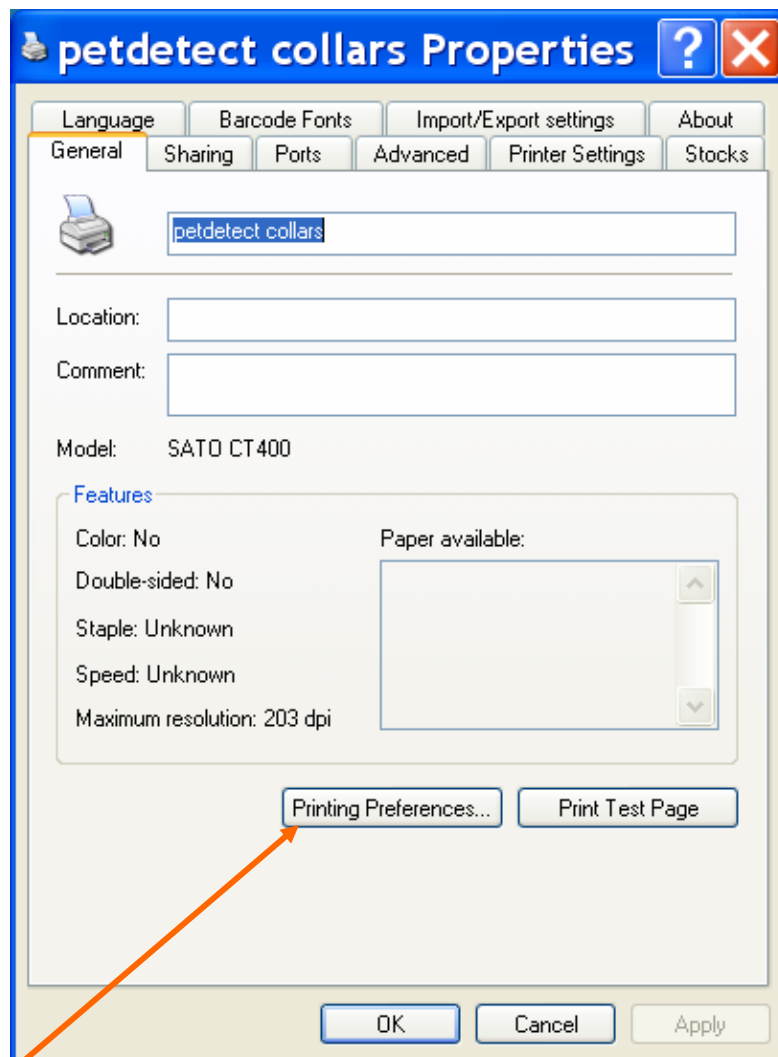


3. Click “OK”.

***Congratulations!* You have installed your PetDetect printer driver. It is now necessary to make several minor changes to the printer properties to communicate with your KennelSoft program.**

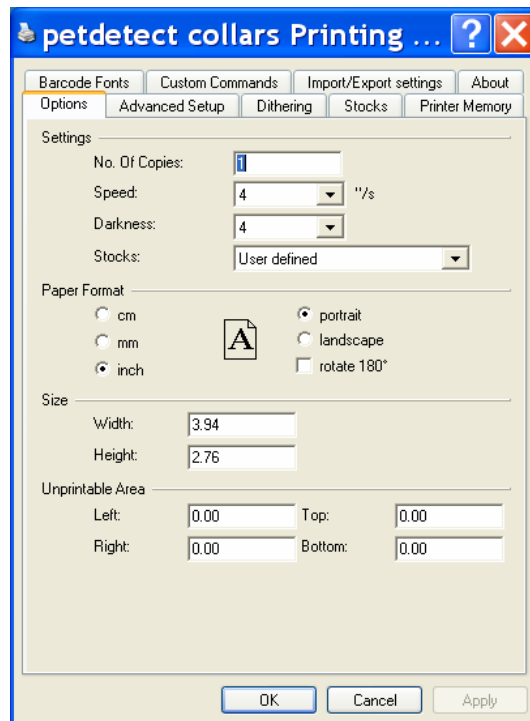
1. Access the printer on your computer by selecting START > CONTROL PANEL > PRINTERS AND FAXES.

2. Right click on the “PetDetect Collars” printer, click “Properties”, and the following window will appear:

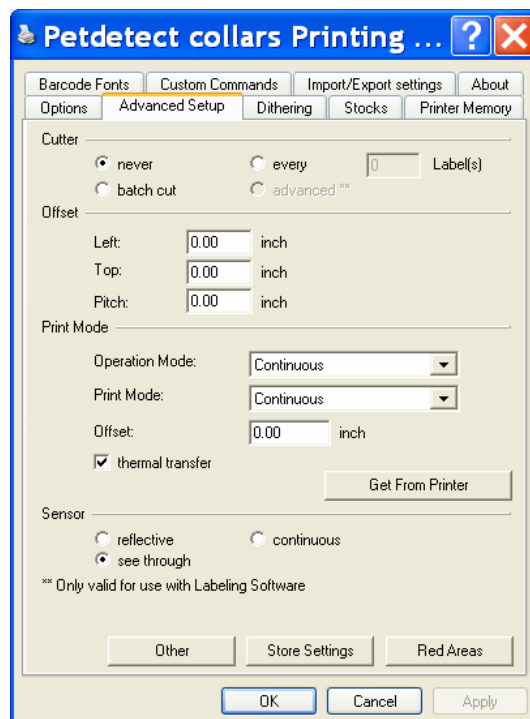


3. Click “Printing Preferences...” and the following window appear:

4. Change the paper format to “landscape”.
Change the “Size Width” to 1.00.
Change the “Size Height” to 5.90.
Click “Apply”.



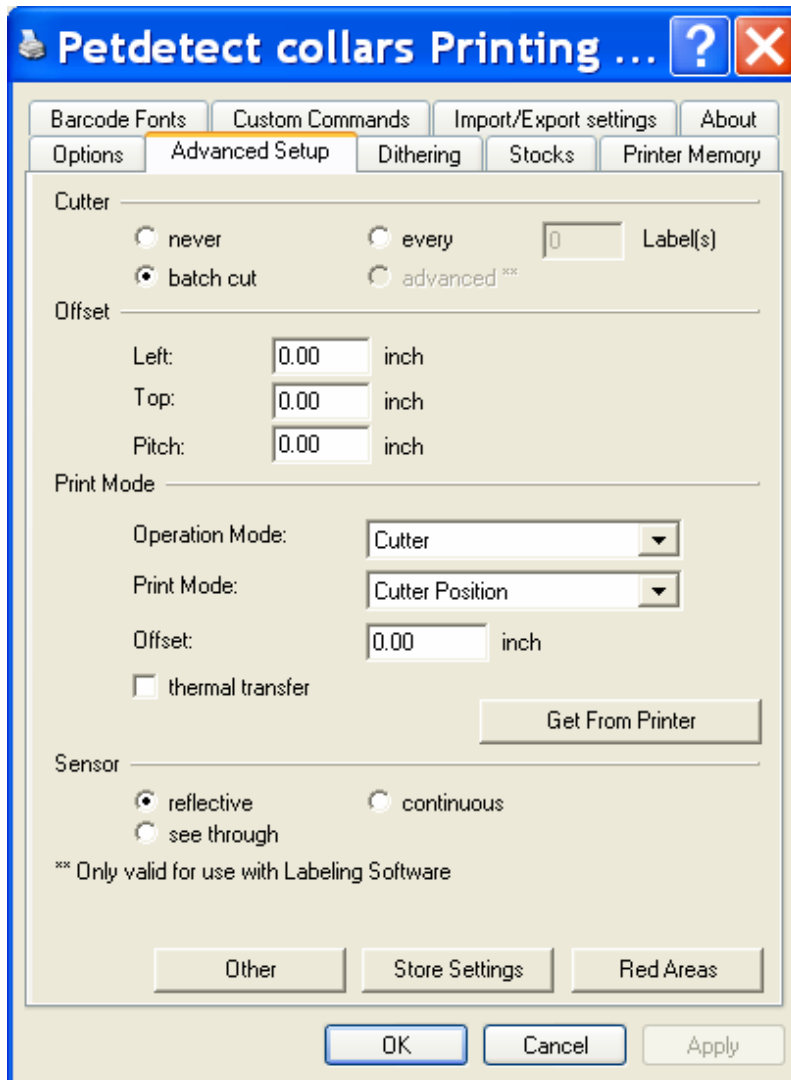
5. Click “Advanced Setup” and the following window will appear:



6. Modify the “Advanced Setup” properties:

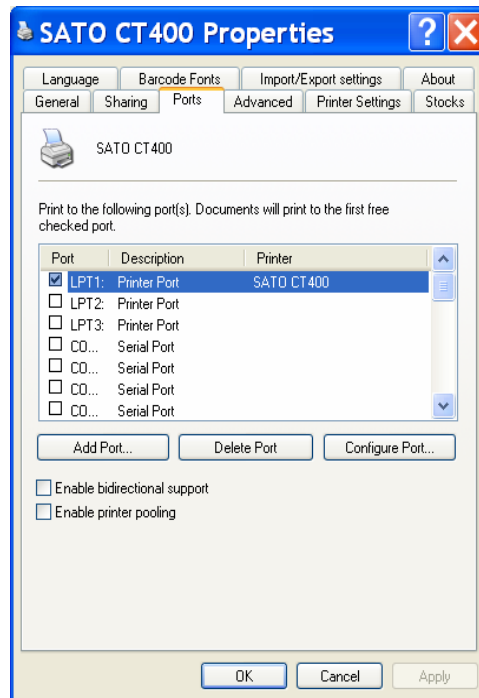
- Change “Cutter” to “batch cut”.
- Change “Operation Mode” to “Cutter”.
- Change “Print Mode” to “Cutter Position”.
- Uncheck “thermal transfer”.
- Change the “Sensor” setting to “reflective”.
- Click “Apply”.

Your page should now appear as follows:



7. Click “OK” to return to the properties page.

8. Click “Ports”. Verify that the “LPT1:” port is checked and “Enable bidirectional support” is UNCHECKED. Click “Apply”.



9. Click “OK” to close the “Properties” window.

**Your printer driver is now installed and configured.
Please proceed to the next page for printer set up
instructions.**

Thank you for selecting PetDetect.



Your printer is installed and your printer driver is now configured. You are now ready to attach your CT-400 to your computer. It may be attached to a single PC or to any of the computers in a network.

- 1. Carefully remove your printer from the carton and select a location for the printer that will be convenient for your staff to retrieve printed collars or ID labels.**
- 2. Locate the SATO Quick Guide and carefully follow the steps on pages 6-10 for setting up and loading the printer.**
- 3. Pay special attention to the paper setting instructions beginning on page 9 of the guide. When adjusting the paper holder to fit the media roll, ensure to lift the roll so that the silver guide pins on each side of the paper holder are inside the core of the roll.**
- 4. The media should roll freely without binding within the paper holder once it has been adjusted.**
- 5. Ignore the Ribbon Setting section of the guide. This does not apply to your printer.**
- 6. Open the updated KennelSoft application. It is now time to add this printer to KennelSoft so that it will direct print jobs properly.**
- 7. Select the file maintenance tab on the appointment screen. Select the file maintenance drop down menu at the top of the screen and select "Setup Configuration" from the drop down menu.**
- 8. Select the "Printer" tab located near the bottom of the window.**

9. You will see a new tab called ID Collars. Select this tab. From the drop down menu you should locate the “PetDetect Collars” printer. Be sure the “Do you use a continuous feed ribbon printer” box is checked.

10. Click on the “Save Changes” button and then click “Done”.

11. Close Kennelsoft and then reopen the program. The changes will not take effect until you have completed this step.

11. Power on the CT-400 printer. If you have already done so, power down, wait 10 seconds and then power up the printer.

12. You are now ready to print! Select the new “print collar” icon in any reservation and select your print option. You may print mini identification labels or collars.

13. Each time the printer is powered down or a new roll is installed, the printer will automatically reposition itself by discarding a short section of label. This is a normal operation to position the media properly.

Now try it! Its fun to use and very functional. You will find many uses throughout your facility for using the PetDetect system. Be sure to send us your ideas and tell us how you have found new uses for the system!

PRINT COLLARS, IDENTIFICATION LABELS FOR GUESTS ARTICLES, MEDICATION LABELS, FILE FOLDER LABELS, REPORT CARD LABELS, OR ANYWHERE POSITIVE IDENTIFICATION IS NEEDED.

Use your imagination!

Print labels for any purpose by using the first and last name fields for a new appointment. Try “first aid” or “employees only” or “mix solution 20 to 1” to produce labels and signs for use throughout your facility

If you have any difficulties, consult the support page at www.PetDetect.com.

THANK YOU AND ENJOY THE VERY LATEST TECHNOLOGY IN POSITIVE PET AND ARTICLE IDENTIFICATION.



You'll wonder how you ever managed without it!